

SAFELOG TOUCH WIRELESS

Monitoring and control unit for self-contained luminaires according to DIN EN 62034

The new SAFELOG control center with integrated wireless function and touch display for monitoring and controlling self-contained luminaires.

The SAFELOG TOUCH WIRELESS control center can monitor up to 1.000 wireless self-contained luminaires (SRD 868MHz).

In addition, up to 500 bus-monitored self-contained luminaires (RS485) can be connected.

Available in 3 versions (wireless+bus) with max. 1.000+500 / 100+100 / 50+50 self-contained luminaires (SRD 868MHz and RS485).

All connected self-contained luminaires are controlled via a multi-touch 5" color display, which shows the operating status of the individual luminaires.

The SAFELOG control center has a network connection with which the device status can be called up using the built-in web server.

The control center can be remotely controlled via the integrated web server and building plans can be stored.



Technical specification

Power supply	1/N/PE AC 50Hz 230V
Power consumption	12 W
Connecting terminals - mains	1.5 mm ² to 2.5 mm ²
Frequency range	863 – 870 MHz (SRD Band)
Maximum transmission power	10 dBm
Wireless range	max. 30 m with direct visual contact
Bus connections	2 x RS485 (5V level) / reverse polarity protection
Switching outputs	3 x change-over contacts (programmable, potential-free)
Switching inputs	2 x optocouplers (programmable, 24V – 230V AC/DC)
Extra power supply	24V / 40 mA for external modules
Ambient temperature	0°C to +35°C
Safety class	II
Protection class of housing	IP65
Dimensions (W x H x D)	240 x 185 x 112 mm
Cable entry	from below

Equipment

- 5" multi-touch color display incl. USB port for connecting an external memory storage, USB printer, keyboard or mouse
- Current status of the luminaires are displayed via icons and in plain text
- Automatic commissioning including luminaire search, no manual addressing of luminaires necessary
- Free entry of luminaire destination designations with max. 30 characters
- RJ45 network connection with TCP / IP protocol
- Integrated web server including web visualization for system monitoring with web control and building visualization
- E-mail notification to distribution list / messages are freely adjustable
- Automatic function and duration test (time freely selectable)
- Electronic test book stores all events in the control center for at least 4 years / evaluation and analysis of the test book results via web control
- 48 freely programmable groups respectively group assignments
- 24 time switches freely programmable
- Luminaires can be switched in maintained and non-maintained mode (all / per bus line / per group / luminaire)
- Combination of wireless and wired bus-monitored luminaires possible
- Password-protected access across two levels (user / installer)



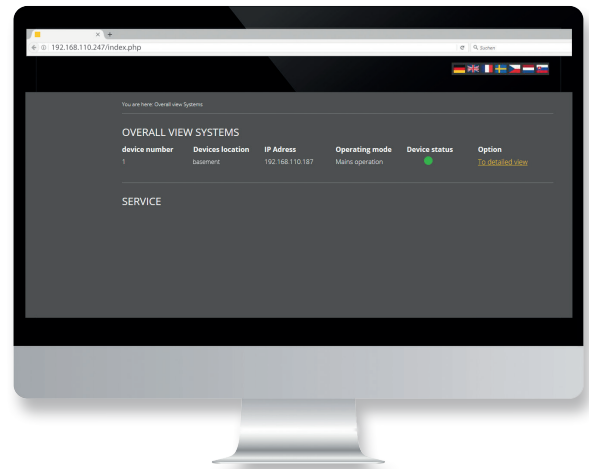
WEB VISUALIZATION

The SAFELOG TOUCH WIRELESS system includes an integrated RJ45 network connection with which the device status can be checked using the built-in web server.

The SAFELOG TOUCH WIRELESS system can be controlled remotely via the web server and building plans can be stored for the building visualization

No additional installations in the network are necessary. A device overview is available to the user in real time by entering the IP address of the SAFELOG TOUCH WIRELESS system in the web browser.

No data has to be imported or read in. All actions take place directly on the SAFELOG TOUCH WIRELESS system.

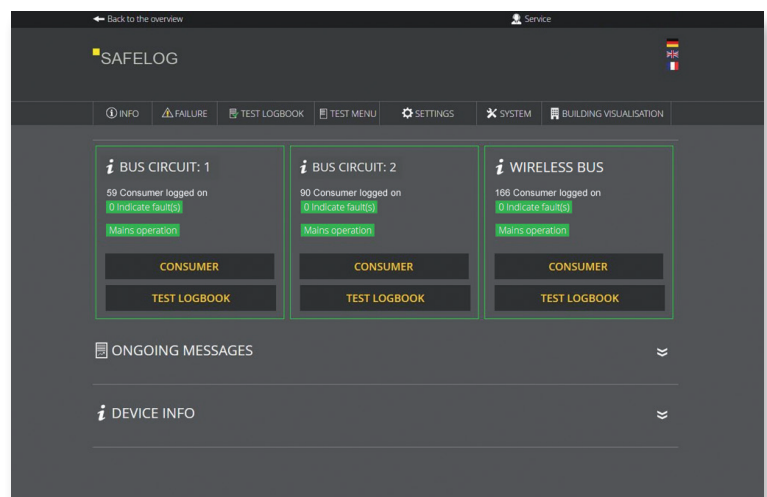


Overview of the control center in the web browser

Detailed view

In the detailed view level, you navigate in the same way as you would at the SAFELOG TOUCH WIRELESS system.

- »Status« display for the bus circuit and individual consumer
- Clear presentation of each bus circuits with all consumers
- Starting and ending function tests with individually selectable times including test logging
- Print and file export functions for all memories (log book), tables, overviews and views
- Configuring groups and time switches
- Setting up E-mail recipients (notification)
- Programming of switching inputs and outputs
- User and rights management with several password-protected user profiles.
The administration of rights and passwords corresponds 1: 1 to the rights and passwords of the SAFELOG TOUCH WIRELESS system





Building visualization

The building visualization gives you an optical presentation of the safety lighting in the building. The visualization gives the user a quick overview of all consumers connected to the SAFELOG TOUCH WIRELESS system.

You can see the status of the SAFELOG TOUCH WIRELESS system and consumers at any time and react promptly in the event of an error. In addition, the building visualization helps users (including those who are not local) to orientate themselves quickly in the building.

The plans for the building visualization are stored as images (* .PNG, * .JPG) in the system. Up to 200 different plans can be stored.



Connection

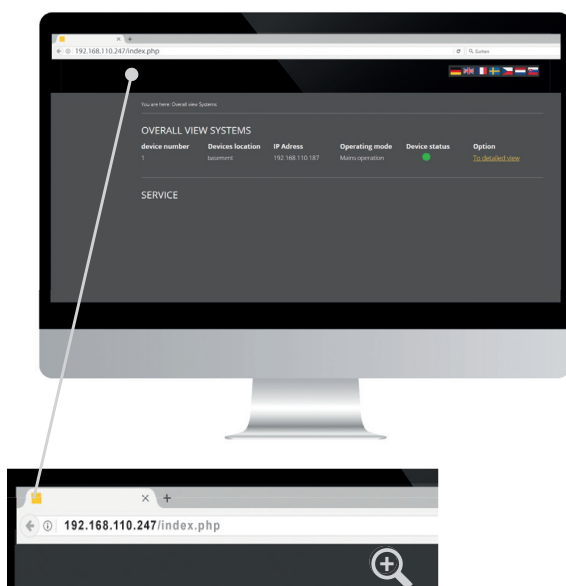
The SAFELOG TOUCH WIRELESS system is integrated into a local network for the use of web visualization. Access to the system within the network must be administered and set up by a responsible IT department.

Connection example

Enter the address via the web browser



Connection example:
Direct access via IP address,
e.g.: 192.168.110.247



IP: 192.168.110.247