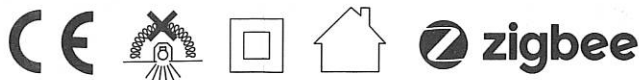


Art.no. 960638CC



Specitication

Power Supply : 220-240VAC, 50/60 Hz
Power Consumption : Max. 4W
Ta : 0°C...+45°C
luminaire Class : Class II

Operation : Non maintained
IP Rating : IP20
Function : Zigbee wireless, DALI with Auto test
Lumen output : 400 lm Ra:70

Precautions

This product should be installed by a registered electrician in accordance with local standards and electrical regulations. Take care to ensure the mains supply is isolated before installation. RISK OF FIRE-Required clearance from structural members and building elements, SCB=0mm HCB=0mm



Recessed LED Downlight Caution: The luminaire is not suitable for covering with thermally insulated material. The luminaire should be positioned so that prolonged staring into the luminaire at a distance closer than 0.3 m is not expected.

LED module is not replaceable; when the light source reaches its end of life the whole luminaire shall be replaced.

Service & Operation

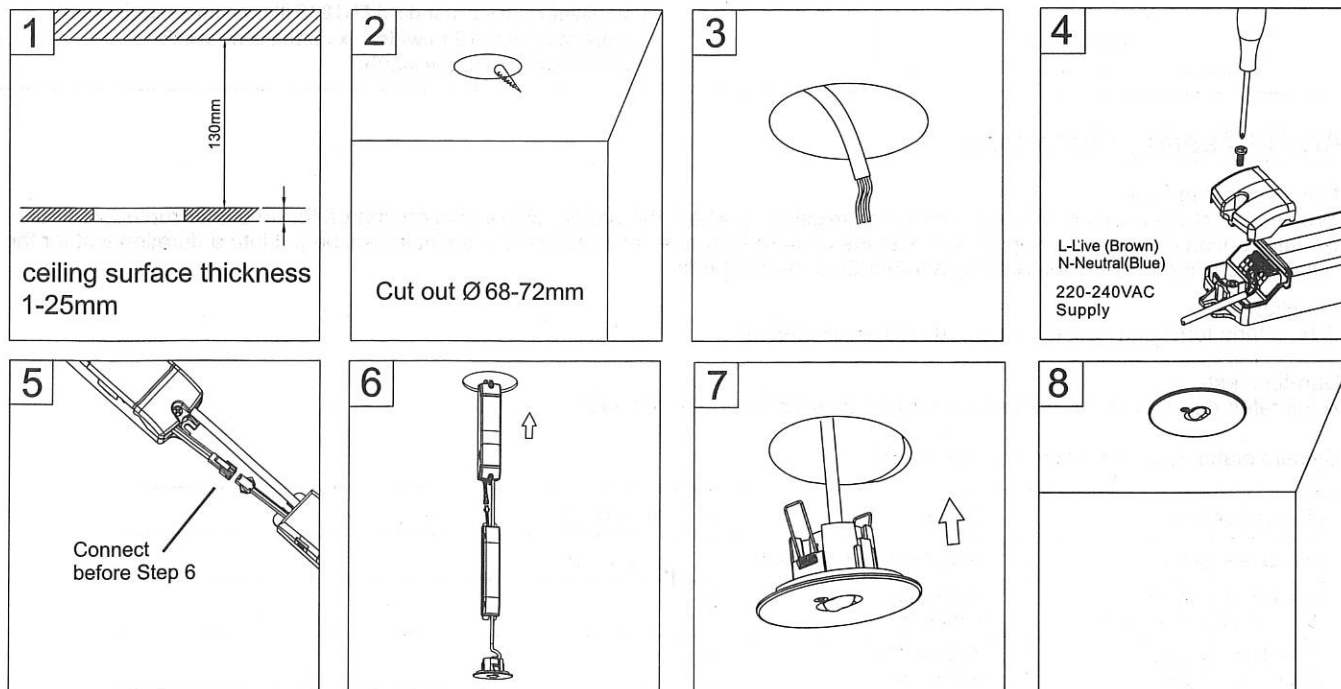
Normal Operation: The green indicator light on face plate stays on. The LED will go out if the mains supply fails, the internal charger malfunctions, or the unit in test mode.

Battery: Sealed LiFePO4 rechargeable battery pack. Battery should be replaced when the required duration is no longer achieved. To avoid any damage to the fixture and ensure its performance, the battery should be replaced with same brand and type.

Test Switch: Press the test switch button, LED indicator will go out and the Fixture will be illuminate from its battery pack.

LED lamp: Non replaceable.

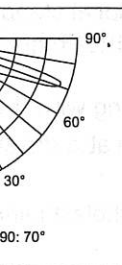
Installation



Technical Information

Model Number	Art.no	Input Voltage	Charge Duration	Discharge Duration	Battery	Power Consumption	LED	Lumen ouput
BrightLed CC Zigbee	960638CC	220-240V~50/60Hz	24h	1h	2*18650 LiFePO4 6.4V 1.5Ah	4W	3535 3W LED	400 lm

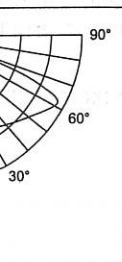
application



Mounting height	Spacing distance
2.5m	22 m
3.0m	25 m
3.5m	27.5 m

Compliant EUROPE standard EN1838 Illuminance requirement:
Escape route up to 2 m wide, 1 lx on the central axis
and 0.5 lx at 50% of the width.

area application



Mounting height	Spacing distance
2.5m	13.0m
3.0m	14.5m
3.5m	16.0m

Compliant EUROPE standard EN1838 Illuminance requirement:
Escape route up to 2 m wide, 1 lx on the central axis
and 0.5 lx at 50% of the width.

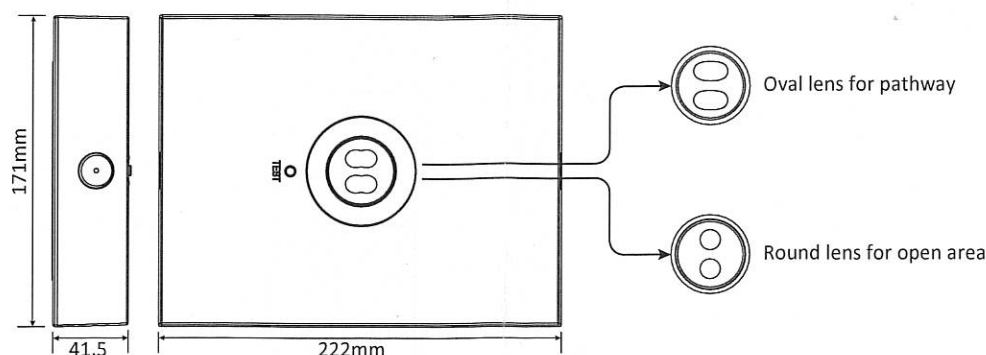
on

will initiate commissioning where the battery will remain on charge for an uninterrupted 24 hours,
only will reset the counter to zero. After 24 hours the luminaire will be put into a duration test for the
and by another 24hr charge period.

ied out at 1 week interval.

d out automatically at 52 weeks intervals.

i-colour LED-



SPECIFICATION

Model	BrightLED CC Zigbee square
Power supply	220~240Vac 50/60Hz
Power consumption	4W
Power output	3.5W
Operation mode	Non-maintained
Battery inbuilt	LiFePO ₄ 6.4V/1.5AH
Charging times	16H
Discharge time	>1 H
CCT	5000K
Lumens output	>390LM
Ra	≥70
Test Complies	DALI, ZigBee Wireless
Size	222*171*41.5mm
Installation Mount	Surface Mounting
Ambient temperature	0°C-40°C
Certificate	CE
IP rating	IP40 (Indoor)

PRE-CAUTIONS

This product should be installed by a registered electrician in accordance with local standards and electrical regulations. Take care to ensure the mains supply is isolated before installation. Check the unit label for correct supply voltage and frequency. Replace the battery when the battery no longer meets its rated duration of operation (see the label of battery replacing) .

GENERAL INFORMATION

This product is a LED emergency light, have self-contained lighting, for pathway and open area used optional. LED light source provides low power consumption and long life. Enclosure is made by polycarbonate, surface mounting.

SERVICE & OPERATION

Normal Operation:

If AC supply is normal, fixture on the charging mode, LED indicator stay on green color, if press the test switch or AC supply failure, LED indicator will go out and the fixture turn to discharge mode.

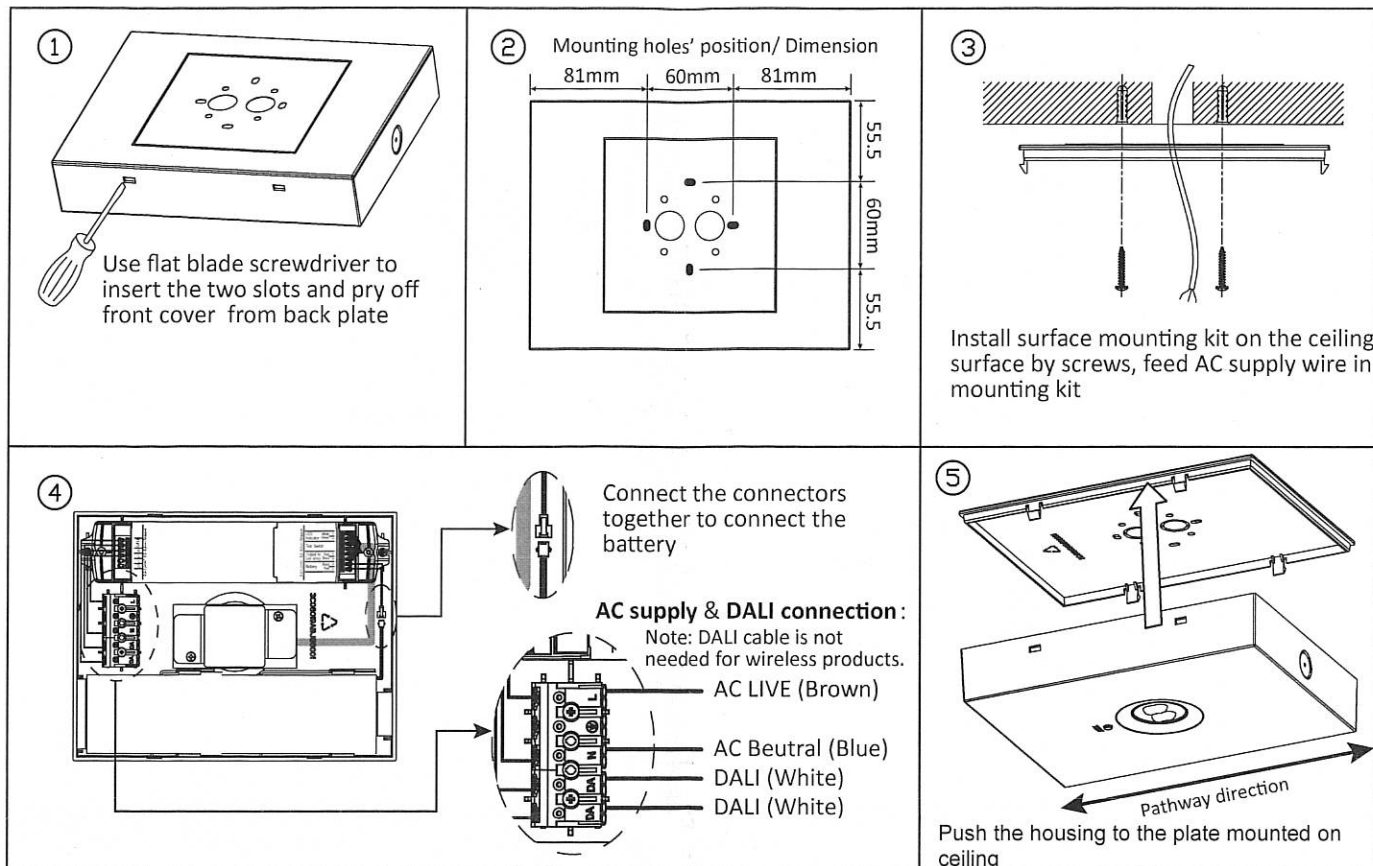
Battery:

Sealed LiFePO₄ rechargeable battery pack. Batteries of a different type must not be used. Battery's should be replaced by authorized service personnel only. If the unit no longer maintains its rated battery backup test times. Should only be replaced with same brand and type. Old battery's should be recycled.

Battery have to recharge if product keep in stock over 12 months, detail manual refer "BATTERY STOCK AND RECHARGE GUIDELINE".

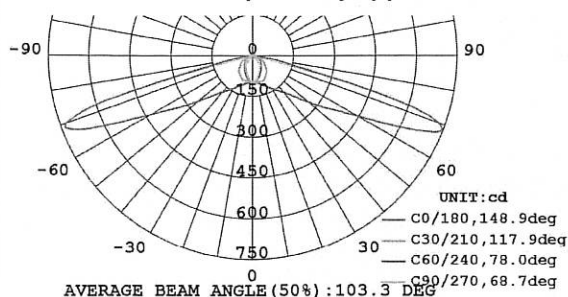
Installation Instruction

Surface mounting instruction



PHOTOMETRIC DATA

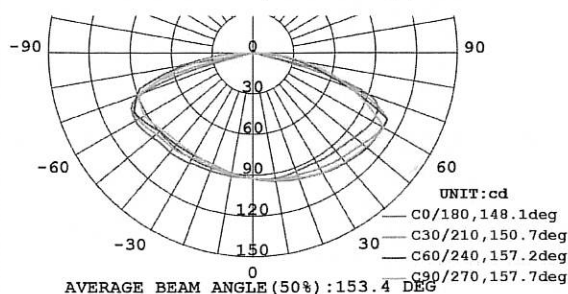
Oval lens for pathway application



Mounting height	□	□	□
2.5m	9m	22.5m	9m
3.0m	10.2m	25.5m	10.2m
3.5m	11.2m	28	11.2m
4.0m	12.2m	30.5m	12.2m

Escape route up to 2 m wide, 1 lx on the central axis and 0.5 lx at 50% of the width.

Round lens for open area application



Mounting height	□	□	□	□
2.5m	5.8m	14.5m	14.5m	5.8m
3.0m	6.4m	16m	16m	6.4m
3.5m	7m	17.5m	17.5m	7m
4.0m	7.4m	18.5m	18.5m	7.4m

Compliant EUROPE standard EN1838 Illuminance requirement:
Escape route up to 2 m wide, 1 lx on the central axis and 0.5 lx at 50% of the width.