

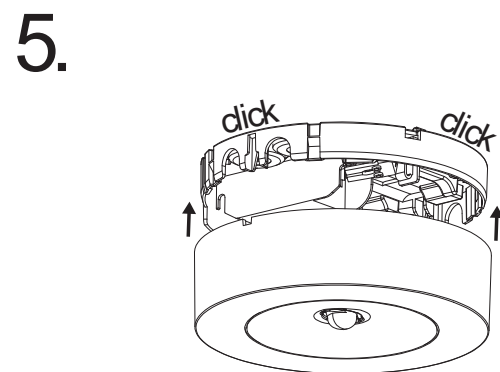
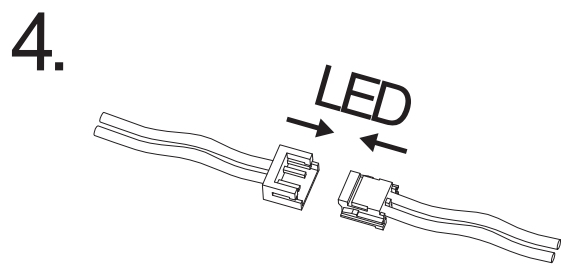
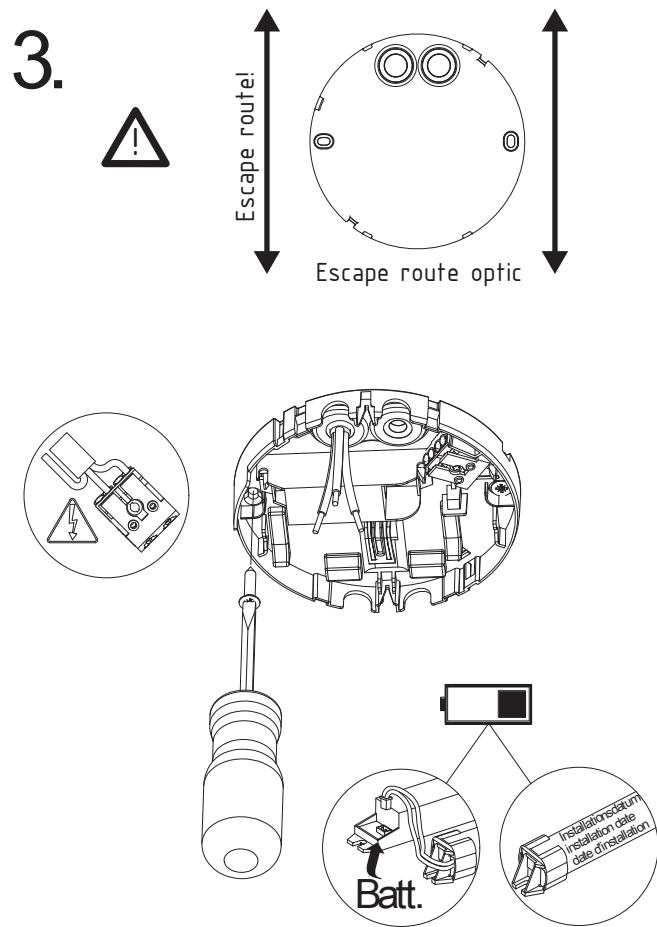
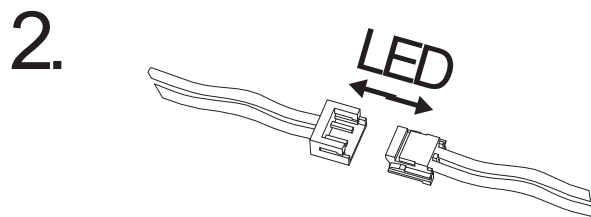
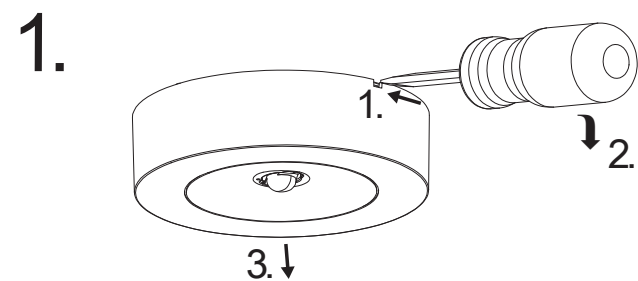
# EFFEKTA

## Installationsmanual

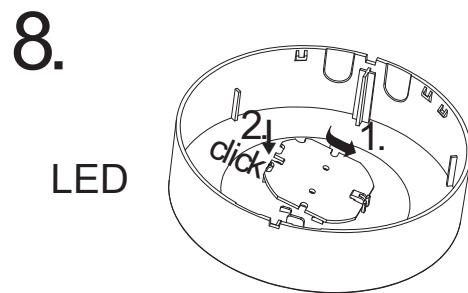
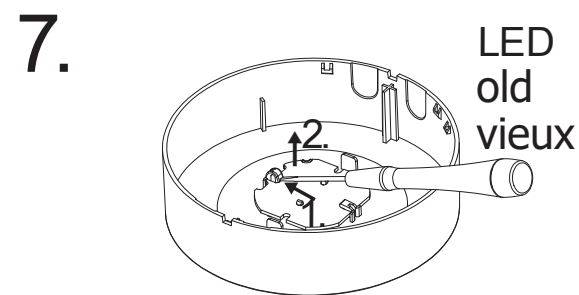
Britespot II  
Utvändig



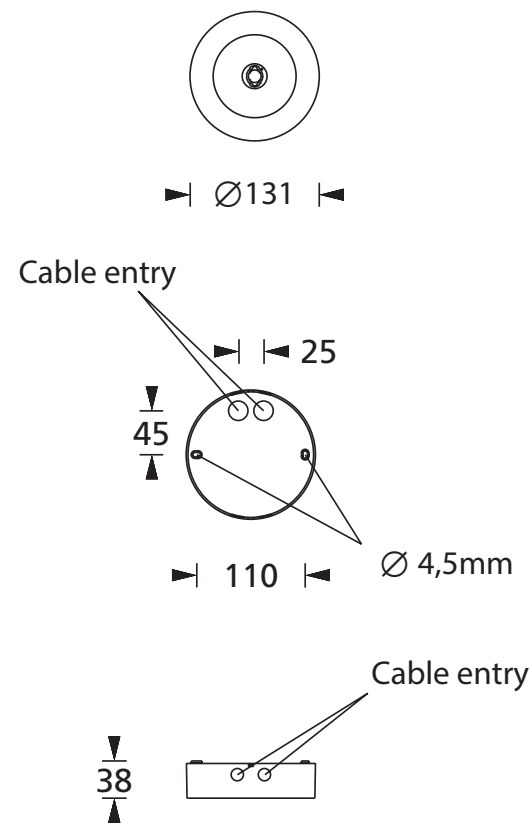
Art.-Nr./Item no./N° d'Art. 670571-V01



6. 1. → 2.



9. 4. → 5.



**Attention!** Make sure to observe the correct directionality in regards to the escape route, when mounting lamps with emergency exit optic! See red instruction label inside luminaire.

🇬🇧 Safety luminaire  
for ceiling assembly

This is a professional manual for certified electricians and professional installation companies only. When installing the self contained version follow the additional instructions.

General safety notices

Relevant safety and accident prevention measures, accepted technology regulations and the following safety notices must be observed when installing or carrying out any work on the safety light. In particular, the lamp must be disconnected from the mains and special care must be taken, as it will still be live from the backup system.

Lamp models with monitoring module

For lamp models with monitoring module for individual lamp monitoring, the configuration of individual lamp addresses and additional functions must be carried out in accordance with the images and data provided on the monitoring module or in the enclosed alignment instructions.

Self contained luminaires

For self contained luminaires the replacement of the battery is needed when the battery no longer meets its rated duration of operation after the corresponding recharge period. Note down the installation date on the provided place of the battery. When installing the self contained version follow the additional instructions. Batteries must be recharged 3 months after delivery date at the latest, otherwise the batteries can be damaged due to a total discharge!

Disposal

Please observe current regulations of ElektroG for the disposal and recycling of lamps.

Spare parts

Only use original parts for the replacement of illuminants, electronic components and accumulators (where applicable) to ensure compliance with nominal data!

Attention










Any damage incurred due to non-compliance with this manual will not be covered by the warranty. We accept no liability for consequential damages incurred due to non-compliance. Make sure to read this manual prior to commissioning the product.

Subject to technical changes without notice!

🇬🇧 Technical specifications

|                  |       |              |           |             |  |
|------------------|-------|--------------|-----------|-------------|--|
| Protection class | IP 40 | Safety class | II / 230V | 2 x 2,5 mm² | Connecting terminals (mm² for double assignment) |
|                  |       |              | III / 24V | 2 x 2,5 mm² |  |

|                    |   |   |   |
|--------------------|---|---|---|
|                    | Wide area / Escape route optic  | Hall downlight  | 5LX   |
| Dimensions (Ø x D) | 131 x 38 mm   | 131 x 39 mm   | 131 x 41 mm   |
|                    |  |  |  |

|                                    |       | Luminaire for CPS   |   | Self contained luminaire 230V   |
|------------------------------------|-------|---|---|---|
|                                    |       | 24V   | 230V  |   |
| Illuminants                        |       |    |    |    |
|                                    |       | <div>3W<br/>LED</div>   | <div>3W<br/>LED</div>   | <div>3W<br/>LED</div>   |
| Light current net                  |       | 240lm   | 240lm   | 50lm  |
| Light current emergency            | 1h/3h |   |   | 240lm   |
|                                    | 8h    |   |   | 110lm   |
| Luminous flux<br>Emergency / Mains | 1h/3h |   |   | 100% / 20%  |
|                                    | 8h    |   |   | 50% / 20% <sup>1)</sup>   |
| Power consumption                  |       | 3,9VA   | 6VA   | 5VA   |
| Battery current input              |       | 105mA   | 15mA  |   |
| Voltage supply                     |       | 24V 50/60Hz / 0Hz   | 230V 50/60Hz /220V DC +25/-20%  | 230V 50/60Hz  |
| Rated duration 2) 3)               |       |   |   | 1h/3h/8h <sup>1)</sup>  |
| NiMh-Akku<br>Battery NiMh          | 1h    |   |   | 4,8V 2,0Ah  |
| Temperature range                  |       | -10°C – +40°C   | -10°C – +40°C   |   |
| no maintained mode                 |       |   |   | -0°C – +35°C  |
| maintained mode                    |       |   |   | -5°C – +30°C  |



<sup>1)</sup> 8h not for 5LX  
<sup>2)</sup> Note down the installation date on the provided place of the battery.  
<sup>3)</sup> When installing the self contained version follow the additional instructions.